

Perquimans County Center for Active Living

Presents a Fabulous Trip To

Ark Encounter & Louisville, KY

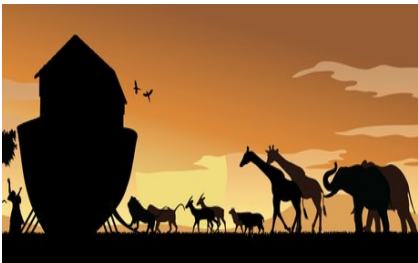


Your 5 Day/4 Night Package Includes:

- ❖ **4 Nights Hotel Accommodations Including:**
- ❖ **4 Breakfasts at Your Hotel**
- ❖ **2 Wonderful Dinners Including:**
- ❖ 1 Dinner at **Emzara's Kitchen** at the Ark Encounter
- ❖ **1 Fabulous Dinner Show at the Derby Dinner Playhouse** - You'll enjoy a Wonderful Meal and Fabulous Broadway-Style Musical Show at one of the oldest and largest continually operating professional dinner theatres in the country.



- ❖ **Experience the Ark Encounter** - **Ark Encounter** features a full-size **Noah's Ark**, built according to the dimensions given in the Bible. Spanning 510 feet long, 85 feet wide, and 51 feet high, it features three decks filled with scores of world-class exhibit bays that allow you to experience what the ark may have been like. See how this amazing structure was built; Learn how **Noah** could have cared for the animals and how the Ark was big enough to fit them on board.



- ❖ **Visit The Kentucky Derby Museum & Churchill**

Downs - The Kentucky Derby Museum is one of the premier attractions in Louisville celebrating the tradition, history, hospitality and pride of the world-renowned event that is the Kentucky Derby. Explore the famous racetrack on a guided tour, experience two floors of interactive exhibits, and get your heart racing and emotions soaring watching "The Greatest Race," an epic 18-minute movie in a 360°, 4K high resolution theater!





❖ **Admission to the Creation Museum** - At the 75,000-square-foot Creation Museum, the pages of the Bible dramatically come to life. Journey through biblical history as you marvel at the Garden of Eden alongside Adam and Eve. Spot the serpent coiled among the tempting fruit and discover more about Noah's Ark and the Flood. You'll see state-of-the-art exhibits, fossils, and even a full-size Allosaurus skeleton. Then

tour the beautiful botanical gardens as you make your way to the petting zoo and camel rides.

- ❖ Standard Taxes, Baggage Handling & Meal Gratuities
- ❖ Deluxe Motor Coach Transportation.

For Information and/or Reservations, Please Contact:

Beverly Gregory @ 252-426-5404

Date of Trip: April 15 – April 19, 2024

Price: \$799.00 Per Person(If Double Occupancy)(\$1,059.00 Single)

First Deposit of \$250.00 or more due at anytime up to January 8, 2024, with final payment in the amount of \$549.00(double occupancy per person) or \$809.00(single occupancy) due by February 19, 2024.

Travel Protection: Travel Protection can be purchased at **\$92.00/person** – double occupancy (\$119.00 for single occupancy.) If you wish to purchase Travel Protection, please send in a separate check made payable to the PML Travel & Tours. Travel Protection should be purchased at the time of your initial deposit to ensure full benefits. **Insurance premiums are non-refundable.** See group leader for details.
Fuel and vendor surcharges may be assessed.

